

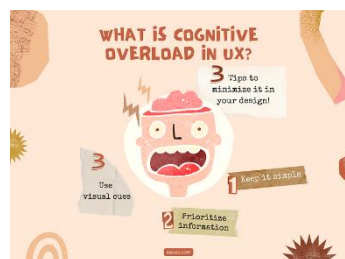
NEWBURGH PRIMARY SCHOOL
IMPROVEMENT PRIORITIES FOR 2024 - 2025



(Children's version)

Quality of Education

Teacher's will adapt your learning to help you know more and remember more by linking your new learning to old learning.



Teacher's will use questioning to stimulate your thinking and allow time for you to express your learning so they can check for misconceptions.



Quality of Education

Teachers will make sure children know their next steps of learning. They will model what you need to do and give extra support as required.



Mrs Slater will ask you questions about your learning and how else we can help you.



Behaviour and attitudes/Personal Development

You are going to present your work beautifully to achieve the highest rewards.
You are going to show respect for your school environment and suggest ideas to improve it.



You are going to attend school as often as possible and be on time.



You are going to learn how to look after your own mental health and our anti-bullying ambassadors will make sure our school feels safe and happy.

