



Newburgh
Primary School

Welcome to Newburgh Primary school

Nurture

Perform

Succeed



Mrs Karen Turner
Headteacher



Madi Thomas
Office Manager

Kirsty Smith
School Business
Manager

Lizzy Bradbury
Administrator

Mandy Elswood
Clerical Assistant

The School Office Team



- Supports families through interactions at the Pastoral door and running our Early Support program
- Will sign post families for extra support and guidance, including financial signposting.
- Runs 1:1 and group Thrive session to support the social, emotional and mental health of our children
- Pastoral2325@welearn365.com

Asa Hicks

Learning Mentor and Thrive Practitioner

- We operate a child-centred, nurturing approach with clear routines and predictable structures.
- Classrooms and shared areas ensure inclusive physical and enabling environment principles.
- Staff are trained in emotion coaching and Zones of Regulation principles.
- Where children need more than the Quality First Teaching universal provision, we deliver interventions that have been proven to be effective through extensive research, across all four areas of SEN.



Mrs Slater Deputy
Head and SENDCo

Special Educational Needs and Disability

Gemma Balestrini

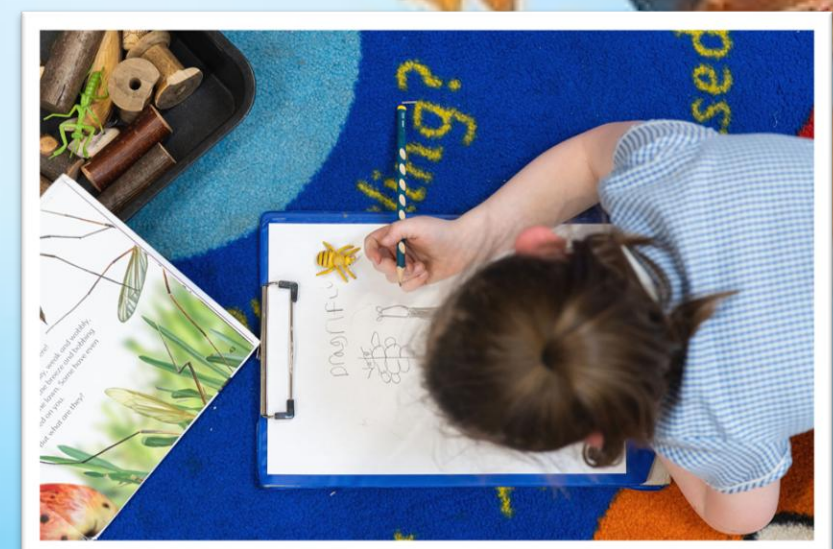


Rebecca Poole

Meet the team



A Typical Day



Water bottles

Please ensure that your child comes to school with a named water bottle and only water is inside.



Book bags

It is helpful if each child has a book bag, we will place their reading book and book from our Reception area inside. They will also place inside any of their wonderful creations from during the day.



Coats and pegs

Children enter school and place their coat on their peg. Please make sure the coat has their name inside.





Our lunch time catering is run by Educaterers. Children in Reception up to Year 2 are entitled to a free school lunch. Each day your child can choose from a range of meals including a vegetarian option, sandwich choice, jacket potato and a meat option. Children will choose their meal during morning registration. Please help your child to choose before school as you will receive a menu plan for the term.



Lunches and lunch boxes



White polo shirt,
black bottoms (trousers, skirts, shorts) or a
pinafore dress
black shoes.

white or black socks

School sweatshirt or cardigan.

Recycled Uniform is available in the office
area- please help yourself.

Please name everything

www.brigade.uk.com

Our Uniform





Black shorts

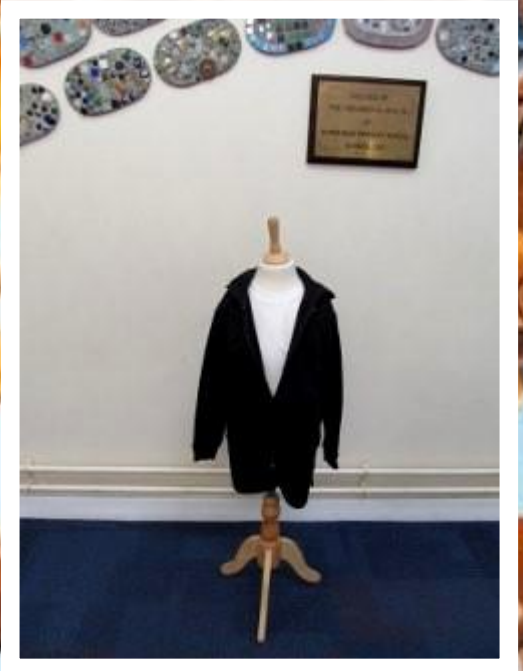
Black or white socks

Plain white T-Shirt

Trainers for outside PE

Black Tracksuit in cold weather
(No Logos)

Children do not need to bring their PE kit into school.
They do need to wear their PE kit all day on their PE days.



Our PE Kit



Getting to know you
1st – 5th June

Teddy Bear's Picnic
8th July
9:30–11:30




Thursday 3rd September
Morning or Afternoon Session
Friday 4th September
9:00–1:00pm

Getting to know you




FOLLOW US
For the latest news

 Newburghpta

 Newburgh primary
school Warwick -pta

 Newburghpta@gmail.
com

*Please get in touch if you
can support or help in anyway*



Summer Fair
3rd July, 3.30 –
5.30

Newburgh PTA



ParentPay



The School Office will distribute log-in information for both platforms on your child's first week at school.

We use parent pay for all payments including lunch and extra curricular activities.

Communication and Online Payments

FREE SCHOOL MEALS



School meals are free for lots of families, check if you are eligible to apply!

So much more than lunch...

A free school meal:

- creates healthy eating habits
- improves learning and behaviour
- saves money and time
- helps schools get extra funding

Did you know that claiming free school meals means that your child will get access to free school holiday activities and food?



To find out more and for help to apply for free school meals, please contact: freemeals@warwickshire.gov.uk or call 01926 359189



Can I apply?

Your child could be eligible for free school meals if you get any of the following:

- Income Support or Jobseeker's Allowance
- Income-related Employment and Support Allowance
- Support from National Asylum Support Service (NASS)
- Guarantee Pension Credit
- Child Tax Credit (with no Working Tax Credit) with an annual income of no more than £16,190
- Working Tax Credit run-on - paid for four weeks after you stop qualifying for Working Tax Credit
- Universal Credit - if you apply on or after 1 April 2018 your household income must be less than £7,400 a year (after tax and not including any benefits you get)

You should still apply if your child is aged 4-7 and receives a universal free school meal

Find out more and apply at www.warwickshire.gov.uk/fsm



PUPIL PREMIUM ENTITLEMENT
If you are in receipt of certain benefits and are a low income household there may be further funding available for you child and the school.

Information about this is detailed in the pupil premium letter you will receive in your pack. Please don't hesitate to call the office to enquire about this or any advice in how to apply for this.

This will all be done in confidence.


Free School Meals and more



www.pathwaysnursery.co.uk/ourkidzone/

01926 403189

Pathways Kidzones

- 
- Walk around the stalls which have important information about aspects of school life.
 - Enjoy spending time in the Reception area with your child.
 - Collect your New Starters Packs.
 - Book your Getting to know you session.

What to do next...

The background of the slide features a bright, clear blue sky with a sunburst effect in the upper right quadrant. Scattered throughout the sky are numerous autumn leaves in shades of yellow, orange, and brown, some appearing to be falling or blowing in the wind.

Our email: admin2325@we-learn.com

Our phone number: 01926 775453

Uniform: www.brigade.uk.com

Milk: www.coolmilk.com

E-Schools: www.newburgh.eschools.co.uk/login/

Parent Pay: www.parentpay.com

Key Contacts and Websites